

CBS ArcSafe®

Distance Is Safety®

A Group CBS Company

Installation and Operation

RSA-34B

For GE TDM Door Mounted Handle
Operating Mechanism and GE 7098 MCC
Bucket - Size 1-4 (Short Handle)



Distance is Safety®

WHAT STANDS
BETWEEN YOU AND
ARC-FLASH DANGER?

**WE
DO.**

2616 Sirius Road | Denton, TX 76208 | (877) 4-SAFETY | www.cbsarcsafe.com

Rev. 10/24/2014

More Products by CBS ArcSafe®

RRS-1 – Universal Remote Racking System (Rotary)

The CBS ArcSafe® RRS-1 is a universal remote racking system capable of remotely installing and removing rotary style draw out circuit breakers without requiring any modification to the existing switchgear. Operation of the simple to use RRS-1 is quite intuitive and requires only minimal setup. When used properly, the RRS-1 allows technicians to remain outside of the arc flash boundary during the potentially dangerous racking operation.

RRS-2 – Universal Remote Racking System (Non-Rotary)

The CBS ArcSafe® RRS-2 is a universal remote racking system capable of remotely installing and removing non-rotary style draw out circuit breakers without requiring any modification to the existing switchgear. Operation of the simple to use RRS-2 is quite intuitive and requires only minimal setup. When used properly, the RRS-2 allows technicians to remain outside of the arc flash boundary during the potentially hazardous racking operation.

RRS-3 – Application Specific Remote Racking System (Rotary And Non-Rotary)

The CBS ArcSafe® RRS-3 product line is made up of various application specific remote breaker racking devices. Each standalone system allows service personnel to remotely install and remove a particular type of circuit breaker safely while stationed safely outside of the arc flash boundary during the potentially dangerous operation. The lightweight and compact design of the RRS-3 systems makes them ideal for hard to access areas where space is at a premium.

RRS-4 – PLC Based Universal Remote Racking System (Rotary)

The CBS ArcSafe® RRS-4 universal remote racking system is an updated PLC based version of the best selling RRS-1. The dual mode, source programmable, PLC based control system offers two different operating modes to choose from based on user preference or the application. The RRS-4 is capable of remotely installing and removing rotary style draw out circuit breakers without requiring any modification to the existing switchgear, allowing users to remain outside of the arc flash boundary during the potentially hazardous racking operation.

RSA – Remote Switch Actuator

The CBS ArcSafe® Remote Switch Actuator (RSA) product line is made up of various application specific remote operating devices. These products allow service personnel to remotely perform all aspects of an operation for a particular type of electrical equipment from outside the arc flash boundary – reducing or eliminating the possibility of serious injury or death resulting from an arc flash.

RSO – Remote Switch Operator

During a remote operation, the CBS ArcSafe® RSO functions as both the power supply and user interface for the device being remotely operated by the user. When paired with an applicable CBS ArcSafe® device, this portable standalone system allows service personnel to remotely perform a racking or switching procedure from outside the arc flash boundary – reducing or eliminating the possibility of injury or death resulting from an arc flash

Published and distributed by:
CBS ArcSafe®
2616 Sirius Road
Denton, Texas 76208

A division of:
GroupCBS, Inc.®
P.O. Box 1557
Gainesville, Texas 76241

Copyright CBS ArcSafe® 2013

Printed in the United States of America
Reproduction, adaptation, or translation without prior written permission is prohibited except as is allowed by law.

1 Installation

DANGER!

Before servicing any breaker, make sure that it matches the breaker discussed. If the breaker does not match the breaker described above, please call CBS ArcSafe® for more information.

ATTENTION!

The location of certain items such as mimic bus, stickers, and/or placards may interfere with the proper installation of the RSA. Please remove or reposition these items before installing the RSA.

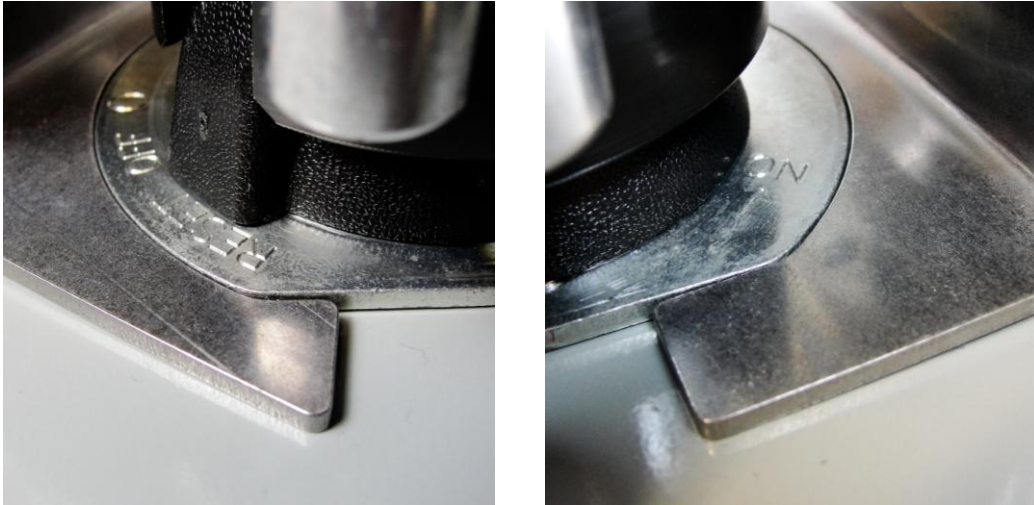
1. Ensure that the Handle Operator to be operated is free from obstructions that may interfere with proper installation of the RSA



2. Mount the RSA on the Motor Control Center by first aligning the handle adapter on the RSA to the Handle Operator on the MCC, and then roll the RSA forward into position.
 - a. The handle adapter on the RSA can be rotated manually or jogged with the RSO to achieve proper alignment.

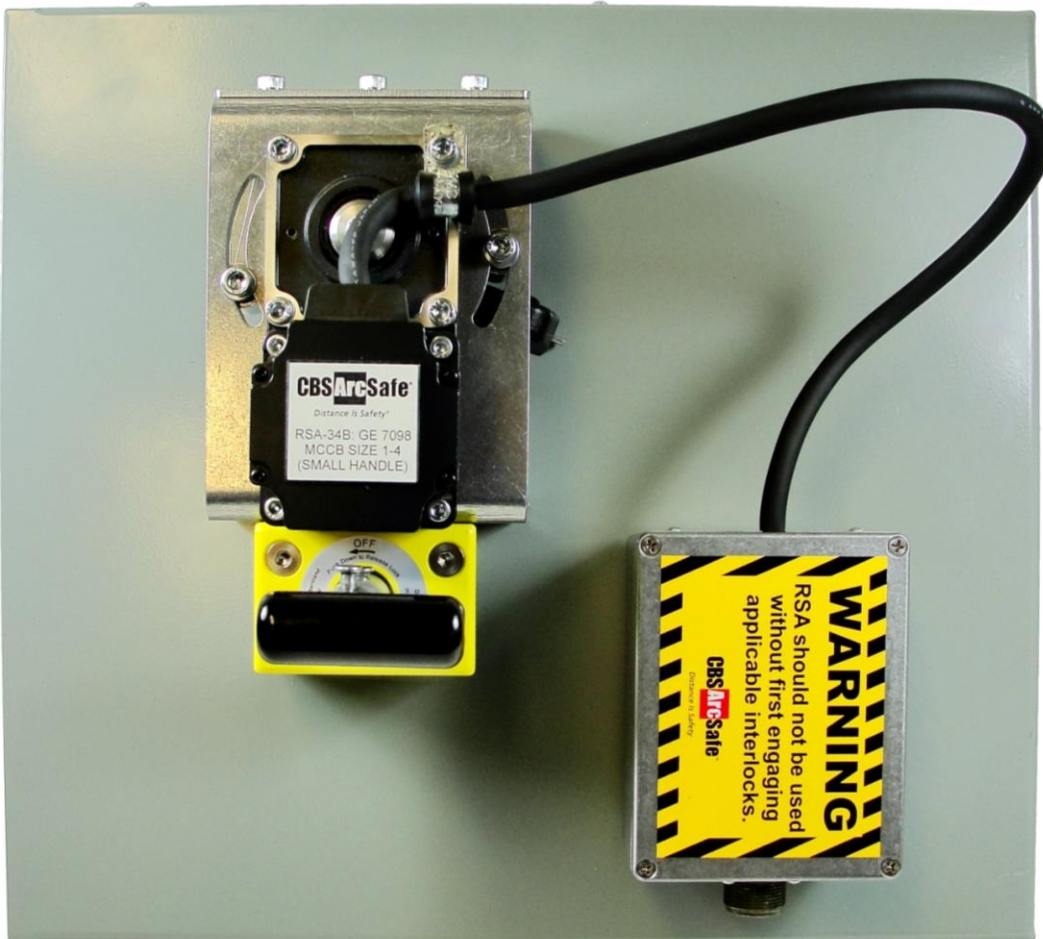


3. Ensure both the locator and magnet on the RSA are flush to the MCC. See the Adjustments section for adjusting the RSA to fit, if necessary.



4. Turn the twist-lock magnet 180° to lock the RSA in place.
5. Place the motor control box on the MCC, taking care that the cord from the motor control box to the RSA is out of the way of any moving parts.

The RSA is now ready for operation.



2 Operation

ATTENTION!

Please ensure that all cables are clear of moving parts. Failure to do so may result in damage to cables and/or actuator.

ATTENTION!

Please ensure that the batteries to the RSO-I AR are fully charged or that the unit is plugged into AC power.

For detailed instructions on the operation of the RSO-I AR please see the RSO-I AR Manual.

1. Ensure that the RSA is properly installed. See the Installation section for detailed instructions.
2. Plug the RSO-I AR into the motor control box.
3. Exit the arc flash boundary
4. Turn the power switch on the RSO-I AR to the ON position.
5. Ensure that the Auto Retract (AR) function is OFF
6. Press and hold TRIP to turn off the Switch.
7. Press and hold CLOSE to turn on Switch.



ATTENTION!

In addition to ON and OFF, this switch has a RESET position. The RSA comes set for normal ON to OFF and OFF to ON operations.

To have the RSA Reset the breaker when switching ON to OFF, it is necessary to adjust the OFF position travel stop, as discussed in the Adjustments section.

3 Adjustments

The RSA comes adjusted from the factory to fit most common configurations, and should not need to be adjusted in most cases. However, if adjustments do need to be performed, it is recommended that they be done on de-energized and isolated equipment to prevent possible damage or injury.

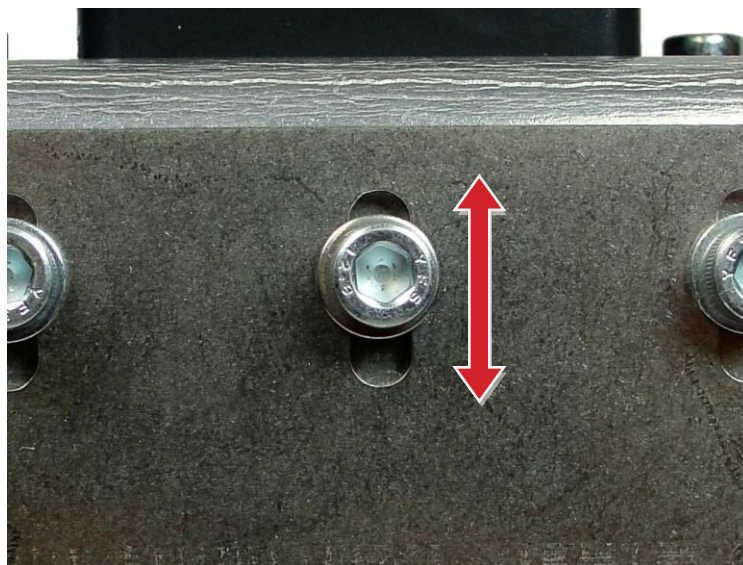
3.1 Locator Adjustment

The locator on the RSA-34B can be adjusted to accommodate some differences in the depth of the Handle Operator.

1. Loosen the three bolts on the locator as shown.



2. Slide the locator to the desired position to accommodate the Handle Operator and align flush as described in the Installation section.

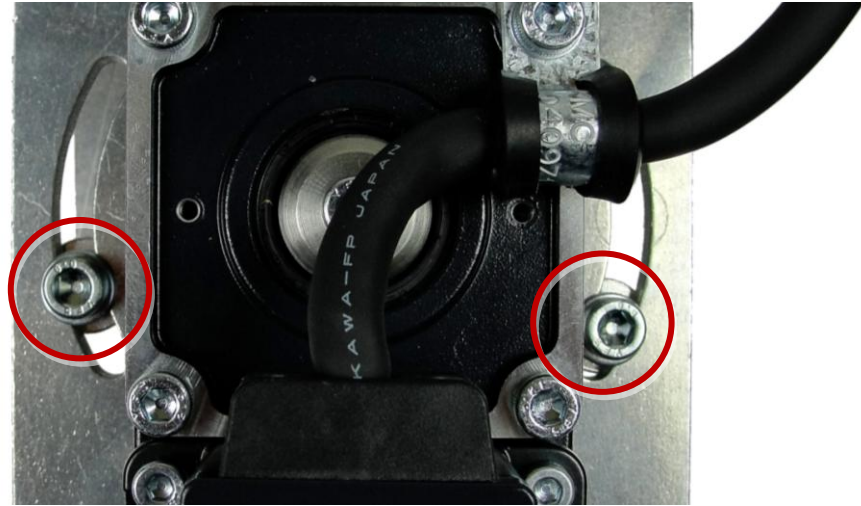


3. Re-tighten the bolts from Step 1.

3.2 Travel Adjustment

The RSA-34B has travel stops on it to prevent over-travel and damage of the handle operator during operation.

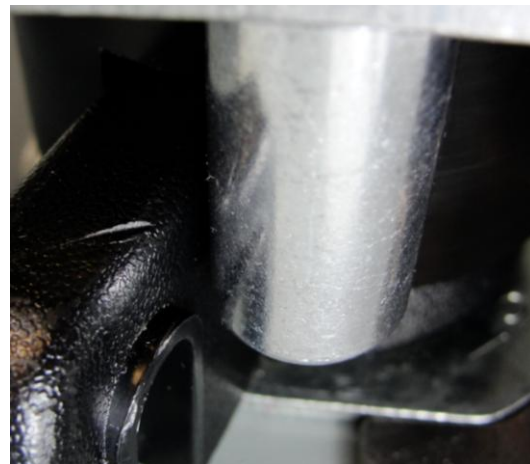
1. Install the RSA as directed in the Installation section
2. Loosen the two bolts on the travel stops.



3. Tap the RSO CLOSE button to carefully jog the RSA until the Handle Operator has reached the ON position. Slide the stop so it sits flush against the handle, and re-tighten the bolt.



4. To set the RSA to stop the switch at the OFF position, tap the RSO TRIP button to carefully jog the RSA until the Handle Operator is at the OFF position. Slide the stop so it sits flush against the handle, and re-tighten the bolt.



5. To set the RSA to stop the switch at the RESET position, tap the RSO TRIP button to carefully jog the RSA until the Handle Operator is at the OFF position. Slide the stop so it sits flush against the handle, and re-tighten the bolt.

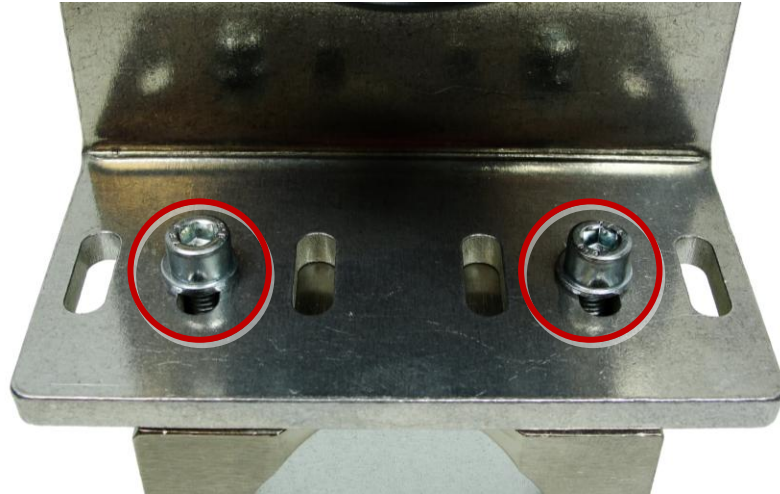


3.3 Magnet Adjustment

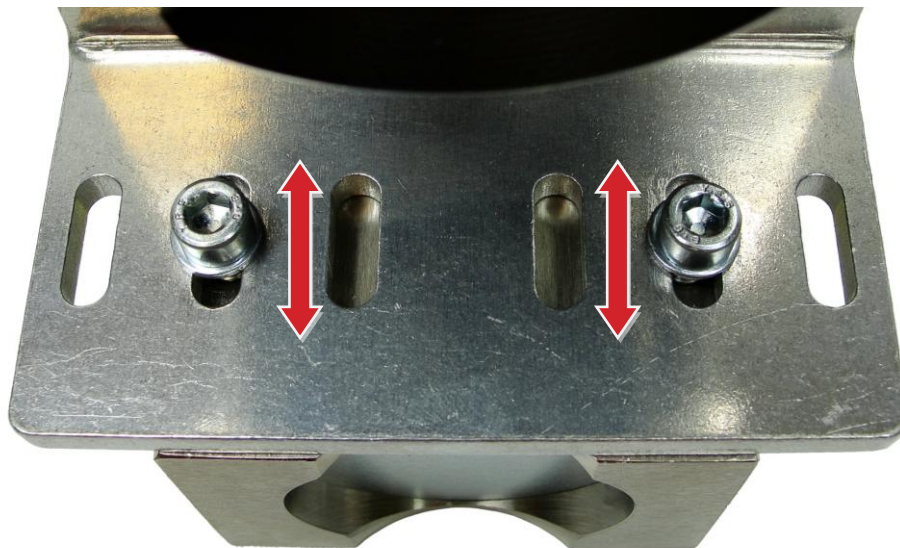
3.3.1 Magnet Depth

The magnet on the RSA-34B can be adjusted to accommodate some differences in the depth of the Handle Operator.

1. Loosen the two bolts on the magnet as shown.



2. Slide the magnet to the desired position to accommodate the Handle Operator depth and align flush as described in the Installation section.

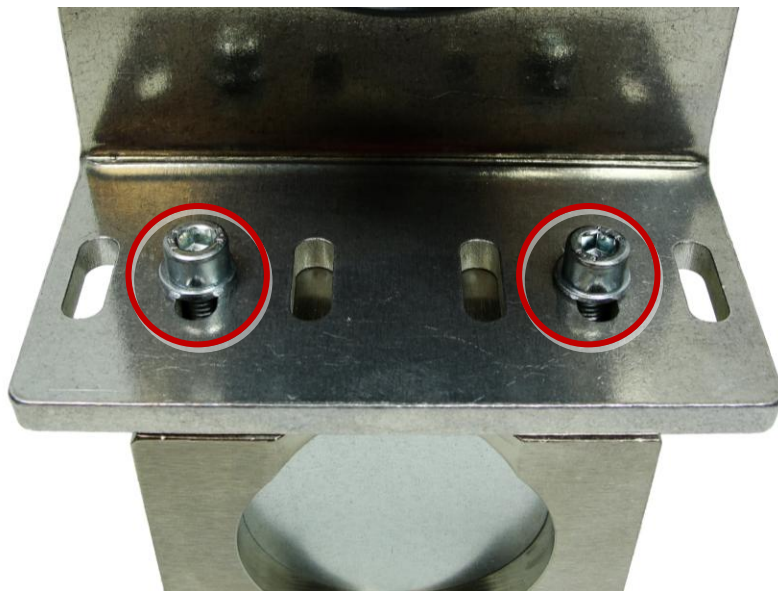


3. Re-tighten the bolts from Step 1.

3.3.2 Magnet Position

The magnet on the RSA-34B can be moved to several locations to accommodate different obstructions that may be present on the Handle Operator.

1. Remove the two bolts on the magnet as shown.



2. Align the magnet to the set of slots which adequately accommodates the obstruction on the Handle Operator or MCC.



3. Place the bolts in the new slots and tighten.



Distance Is Safety®

A Group CBS Company

RSA-34B
Installation and Operation

2616 Sirius Road
Denton, TX 76208
Tel: 877-4-SAFETY
Fax: 940-382-9435
Website: www.CBSArcSafe.com
Email: info@CBSArcSafe.com

DANGER!

Ensure that personnel using this equipment are adequately trained in the operation of the switchgear they are planning to work with; that they are correctly stationed outside the arc flash boundary; and that they comply with all applicable Federal, State, Local, and In-house safety regulations and procedures. Attention should be given to distance, angle, and personal protective equipment (PPE).