

# CBS ArcSafe®

*Distance Is Safety®*

A Group CBS Company

# Installation and Operation

## RSA-57E

For Square D MCCB - L/Q4 Frame

125-400A, Recessed Mounted, With Or Without Factory Lockout

Includes LA, LH, LY, Q4 Frames



**Distance is Safety®**

WHAT STANDS  
BETWEEN YOU AND  
ARC-FLASH DANGER?

**WE  
DO.**

2616 Sirius Road | Denton, TX 76208 | (877) 4-SAFETY | [www.cbsarcsafe.com](http://www.cbsarcsafe.com)

Rev. 10/4/2018

## More Products by CBS ArcSafe®

### **RRS-1 – Universal Remote Racking System (Rotary)**

The CBS ArcSafe® RRS-1 is a universal remote racking system capable of remotely installing and removing rotary style draw out circuit breakers without requiring any modification to the existing switchgear. Operation of the simple to use RRS-1 is quite intuitive and requires only minimal setup. When used properly, the RRS-1 allows technicians to remain outside of the arc flash boundary during the potentially dangerous racking operation.

### **RRS-2 – Universal Remote Racking System (Non-Rotary)**

The CBS ArcSafe® RRS-2 is a universal remote racking system capable of remotely installing and removing non-rotary style draw out circuit breakers without requiring any modification to the existing switchgear. Operation of the simple to use RRS-2 is quite intuitive and requires only minimal setup. When used properly, the RRS-2 allows technicians to remain outside of the arc flash boundary during the potentially hazardous racking operation.

### **RRS-3 – Application Specific Remote Racking System (Rotary And Non-Rotary)**

The CBS ArcSafe® RRS-3 product line is made up of various application specific remote breaker racking devices. Each standalone system allows service personnel to remotely install and remove a particular type of circuit breaker safely while stationed safely outside of the arc flash boundary during the potentially dangerous operation. The lightweight and compact design of the RRS-3 systems makes them ideal for hard to access areas where space is at a premium.

### **RRS-4 – PLC Based Universal Remote Racking System (Rotary)**

The CBS ArcSafe® RRS-4 universal remote racking system is an updated PLC based version of the best selling RRS-1. The dual mode, source programmable, PLC based control system offers two different operating modes to choose from based on user preference or the application. The RRS-4 is capable of remotely installing and removing rotary style draw out circuit breakers without requiring any modification to the existing switchgear, allowing users to remain outside of the arc flash boundary during the potentially hazardous racking operation.

### **RSA – Remote Switch Actuator**

The CBS ArcSafe® Remote Switch Actuator (RSA) product line is made up of various application specific remote operating devices. These products allow service personnel to remotely perform all aspects of an operation for a particular type of electrical equipment from outside the arc flash boundary – reducing or eliminating the possibility of serious injury or death resulting from an arc flash.

### **RSO – Remote Switch Operator**

During a remote operation, the CBS ArcSafe® RSO functions as both the power supply and user interface for the device being remotely operated by the user. When paired with an applicable CBS ArcSafe® device, this portable standalone system allows service personnel to remotely perform a racking or switching procedure from outside the arc flash boundary – reducing or eliminating the possibility of injury or death resulting from an arc flash

Published and distributed by:  
CBS ArcSafe®  
2616 Sirius Road  
Denton, Texas 76208

A division of:  
GroupCBS, Inc.®  
P.O. Box 1557  
Gainesville, Texas 76241

Copyright CBS ArcSafe® 2018

Printed in the United States of America  
Reproduction, adaptation, or translation without prior written permission is prohibited except as is allowed by law.

# 1 Installation

## DANGER!

Before servicing any breaker, make sure that it matches the breaker discussed. If the breaker does not match the breaker described above, please call CBS ArcSafe® for more information.

## ATTENTION!

The location of certain items such as mimic bus, stickers, and/or placards may interfere with the proper installation of the RSA. Please remove or reposition these items before installing the RSA.

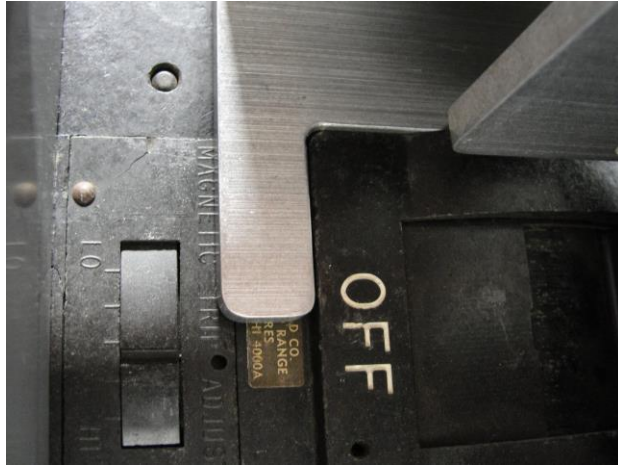
1. Ensure that the breaker is free from any obstruction that may interfere with the proper installation of the RSA.



2. Place the over the switch, and verify the switch is between the forks of the RSA. When installing in the OFF position, the right roller should be touching the switch. See the Adjustments section for adjustment locations if it isn't touching the switch.



3. Verify the magnets are fully seated against the panel with no obstructions, and the locators are flush with the top and side edges of the breaker as shown below.



4. To attach the RSA to the breaker turn the handles of the two twist-lock magnets 180° clockwise. The RSA is now ready for remote operation



## 2 Operation

### ATTENTION!

Please ensure that all cables are clear of moving parts. Failure to do so may result in damage to cables and/or actuator.

### ATTENTION!

Please ensure that the batteries to the RSO-I AR are fully charged or that the unit is plugged into AC power.

For detailed instructions on the operation of the RSO-I AR please see the RSO-I AR Manual.

1. Ensure that the RSA is properly installed. See Section 3 for detailed instructions.
2. Plug the four-pin threaded cable from the RSO-I AR into the RSA.
3. Exit the arc flash boundary
4. Turn the power switch on the RSO-I AR to the ON position.
5. Ensure that the Auto Retract (AR) function is set according to the placard on the RSA. If not specified, the default is OFF.
6. If the breaker is ON and needs to be turned OFF then push and hold the TRIP button on the RSO-I until the breaker is tripped.
7. If the breaker is OFF and needs to be turned ON then push and hold the CLOSE button on the RSO-I until the breaker is closed.



## 3 Adjustments

### 3.1 Depth Adjustment

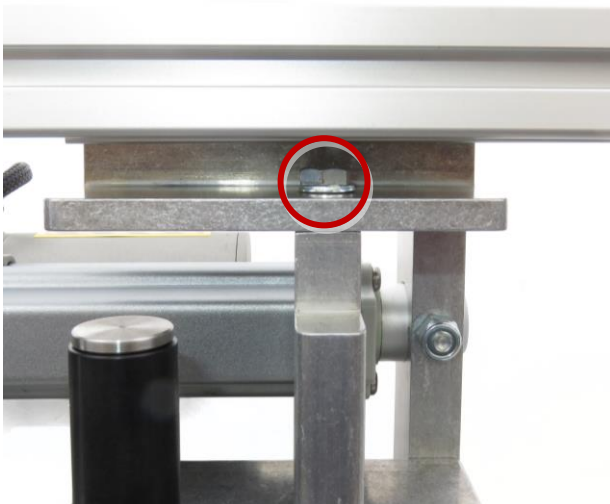
To adjust the depth of the RSA-57G, loosen the two bolts on each side of the RSA and slide up or down until the RSA is seated flush against the cabinet. Be sure to retighten the bolts before operating.



### 3.2 Actuator Fork Adjustment

If the fixed fork on the RSA interferes with the breaker lockout, it can be moved out of the way.

1. Loosen the three bolts on the fixed fork, as indicated below.



2. Install the RSA as described in the Installation section.
3. Slide the fork as required to clear the lockout adequately.
4. Re-tighten the bolts loosened during adjustment.





*Distance Is Safety*®

A Group CBS Company

RSA-57E  
Installation and Operation

2616 Sirius Road  
Denton, TX 76208  
Tel: 877-4-SAFETY  
Fax: 940-382-9435  
Website: [www.CBSArcSafe.com](http://www.CBSArcSafe.com)  
Email: [info@CBSArcSafe.com](mailto:info@CBSArcSafe.com)

**DANGER!**

Ensure that personnel using this equipment are adequately trained in the operation of the switchgear they are planning to work with; that they are correctly stationed outside the arc flash boundary; and that they comply with all applicable Federal, State, Local, and In-house safety regulations and procedures. Attention should be given to distance, angle, and personal protective equipment (PPE).