

CBS ArcSafe®

Distance Is Safety®

A Group CBS Company

Installation and Operation

RSA-57V

For Square D MCCB

Square D MCCB - P Frame (600-2500A, Flush Mounted,
Includes PA, PH, PY, PC, PI, PE, PX)



Distance is Safety®

WHAT STANDS
BETWEEN YOU AND
ARC-FLASH DANGER?

**WE
DO.**

2616 Sirius Road | Denton, TX 76208 | (877) 4-SAFETY | www.cbsarcsafe.com

Rev. 4/8/2016

More Products by CBS ArcSafe®

RRS-1 – Universal Remote Racking System (Rotary)

The CBS ArcSafe® RRS-1 is a universal remote racking system capable of remotely installing and removing rotary style draw out circuit breakers without requiring any modification to the existing switchgear. Operation of the simple to use RRS-1 is quite intuitive and requires only minimal setup. When used properly, the RRS-1 allows technicians to remain outside of the arc flash boundary during the potentially dangerous racking operation.

RRS-2 – Universal Remote Racking System (Non-Rotary)

The CBS ArcSafe® RRS-2 is a universal remote racking system capable of remotely installing and removing non-rotary style draw out circuit breakers without requiring any modification to the existing switchgear. Operation of the simple to use RRS-2 is quite intuitive and requires only minimal setup. When used properly, the RRS-2 allows technicians to remain outside of the arc flash boundary during the potentially hazardous racking operation.

RRS-3 – Application Specific Remote Racking System (Rotary And Non-Rotary)

The CBS ArcSafe® RRS-3 product line is made up of various application specific remote breaker racking devices. Each standalone system allows service personnel to remotely install and remove a particular type of circuit breaker safely while stationed safely outside of the arc flash boundary during the potentially dangerous operation. The lightweight and compact design of the RRS-3 systems makes them ideal for hard to access areas where space is at a premium.

RRS-4 – PLC Based Universal Remote Racking System (Rotary)

The CBS ArcSafe® RRS-4 universal remote racking system is an updated PLC based version of the best selling RRS-1. The dual mode, source programmable, PLC based control system offers two different operating modes to choose from based on user preference or the application. The RRS-4 is capable of remotely installing and removing rotary style draw out circuit breakers without requiring any modification to the existing switchgear, allowing users to remain outside of the arc flash boundary during the potentially hazardous racking operation.

RSA – Remote Switch Actuator

The CBS ArcSafe® Remote Switch Actuator (RSA) product line is made up of various application specific remote operating devices. These products allow service personnel to remotely perform all aspects of an operation for a particular type of electrical equipment from outside the arc flash boundary – reducing or eliminating the possibility of serious injury or death resulting from an arc flash.

RSO – Remote Switch Operator

During a remote operation, the CBS ArcSafe® RSO functions as both the power supply and user interface for the device being remotely operated by the user. When paired with an applicable CBS ArcSafe® device, this portable standalone system allows service personnel to remotely perform a racking or switching procedure from outside the arc flash boundary – reducing or eliminating the possibility of injury or death resulting from an arc flash

Published and distributed by:
CBS ArcSafe®
2616 Sirius Road
Denton, Texas 76208

A division of:
GroupCBS, Inc.®
P.O. Box 1557
Gainesville, Texas 76241

Copyright CBS ArcSafe® 2013

Printed in the United States of America
Reproduction, adaptation, or translation without prior written permission is prohibited except as is allowed by law.

1 Installation

DANGER!

Before servicing any breaker, make sure that it matches the breaker discussed. If the breaker does not match the breaker described above, please call CBS ArcSafe® for more information.

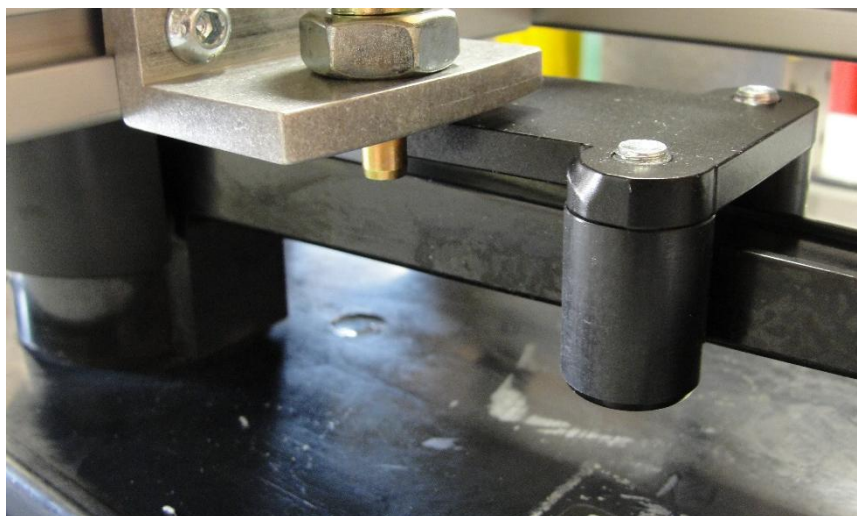
ATTENTION!

The location of certain items such as mimic bus, stickers, and/or placards may interfere with the proper installation of the RSA. Please remove or reposition these items before installing the RSA.

1. Ensure that the breaker is free from any obstruction that may interfere with the proper installation of the RSA.



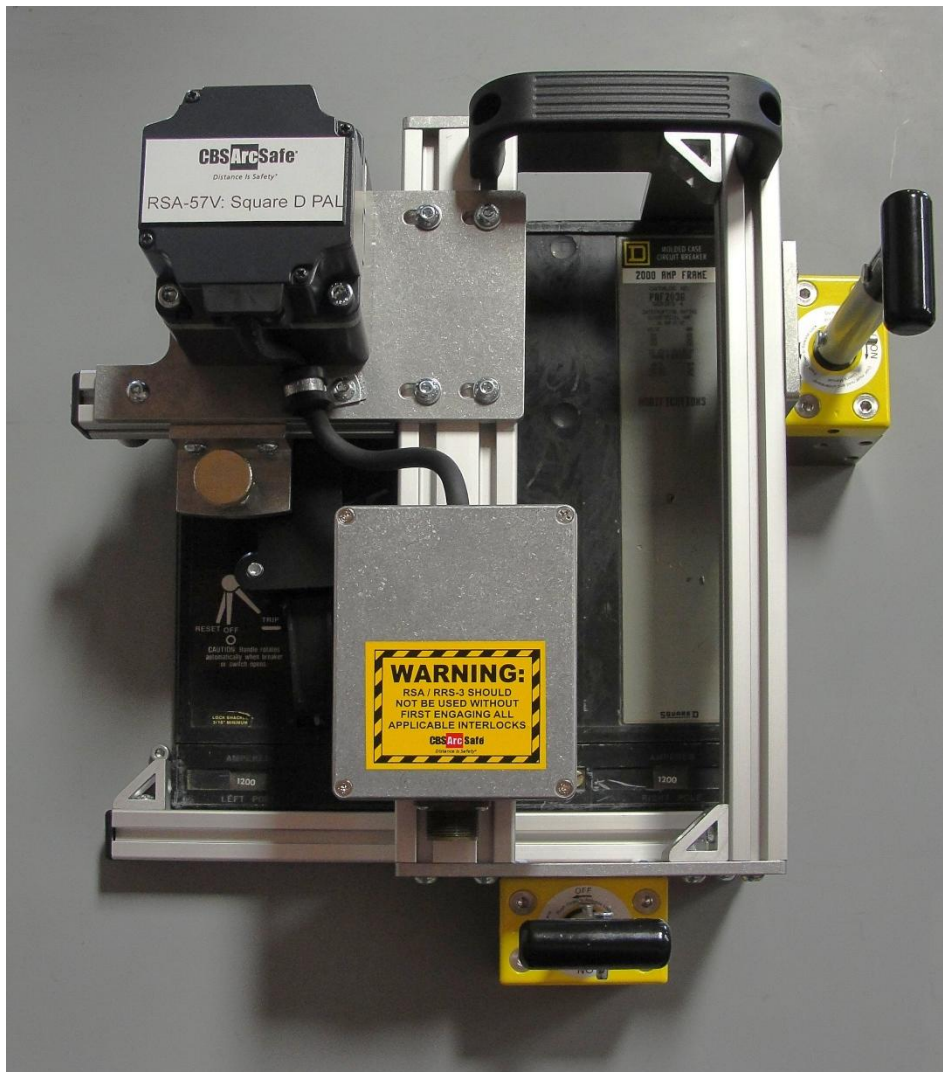
2. Manually rotate the handle adapter to match to position of the breaker handle.
3. Place the RSA on the face of the breaker ensuring that the handle adapter is properly seated on the breaker handle.



4. Ensure the upper and lower locators on the RSA are properly positioned, and seated flush against the breaker, as shown. Also ensure that the locating tabs are seated between the breaker and switch-gear door, and flush to the bottom of the breaker.

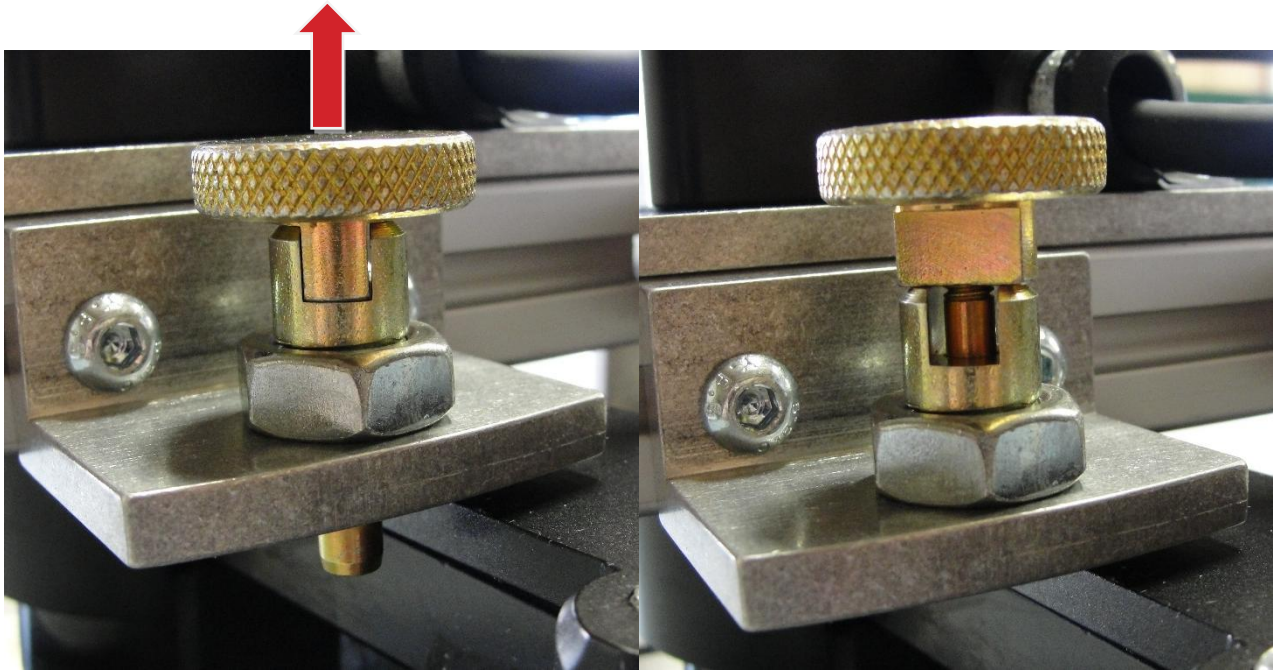


5. To attach the RSA to the breaker turn the handles of the two twist-lock magnets 180° clockwise. The RSA-57V is now ready for remote operation



NOTE:

The RSA-57V features a retractable stop, if the stop is engaged then the breaker will Trip, if the stop is disengaged the breaker will be allowed to reset. To reset the breaker pull out the stop knob and rotate 90 degrees to disengage stop.



2 Operation

ATTENTION!

Please ensure that all cables are clear of moving parts. Failure to do so may result in damage to cables and/or actuator.

ATTENTION!

Please ensure that the batteries to the RSO-I AR are fully charged or that the unit is plugged into AC power.

For detailed instructions on the operation of the RSO-I AR please see the RSO-I AR Manual.

1. Ensure that the RSA is properly installed. See Section 3 for detailed instructions.
2. Plug the RSO-I AR into the motor control box.
3. Exit the arc flash boundary
4. Turn the power switch on the RSO-I AR to the ON position.
5. Ensure that the Auto Retract (AR) function is set according to the placard on the RSA. If not specified, leave AR turned OFF.
6. If the breaker is ON and needs to be reset, then
7. Pull out the stop knob and rotate 90 degrees to disengage stop. See Installation section for details.
8. Press and hold the TRIP button on the RSO-I AR until the breaker is reset.
9. If the breaker is OFF and needs to be turned ON then push and hold the CLOSE button on the RSO-I AR until the breaker is closed.



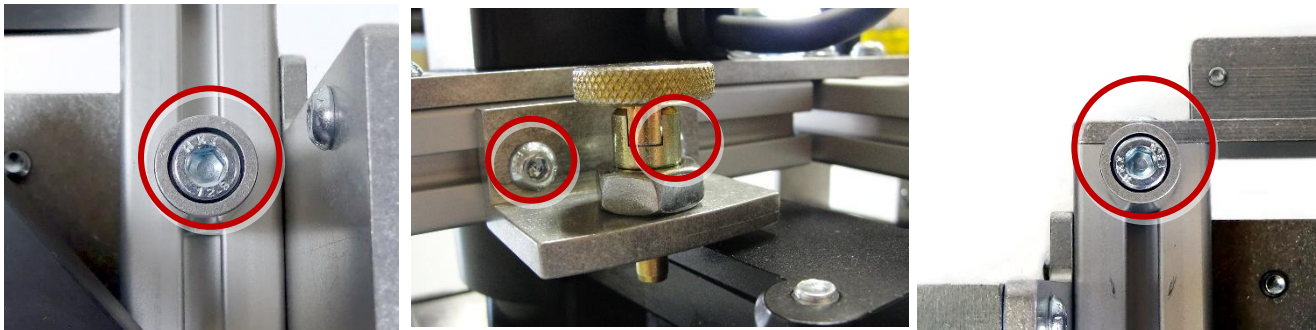
3 Adjustments

The RSA comes adjusted from the factory to fit most common configurations, and should not need to be adjusted in most cases. However, if adjustments do need to be performed, it is recommended that they be done on de-energized and isolated equipment to prevent possible damage or injury.

3.1 Travel Adjustment

The RSA-57V has travel stops on it to prevent over-travel and damage of the handle operator during operation.

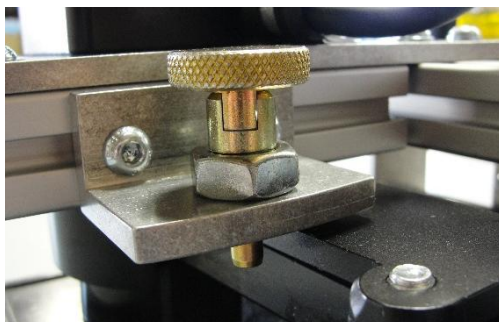
1. Install the RSA as directed in the Installation section
2. Loosen the two bolts on the aluminum travel stops and the two bolts on the retractable stop mount.



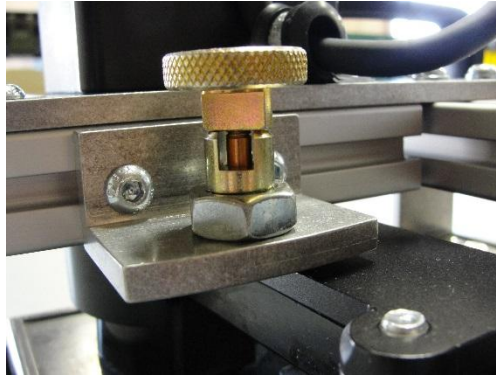
3. To set the RSA to stop the handle at the ON position, tap the CLOSE button on the RSO to carefully jog the RSA until the Handle Operator has reached the ON position. Slide the stop so it sits flush against the handle, and re-tighten the bolt.



4. To set the RSA to stop the switch at the OFF position, tap the RSO TRIP button to carefully jog the RSA until the Handle Operator is at the OFF position. Slide the mount for the retractable stop so it sits flush against the handle, and re-tighten the two bolts for the retractable stop mount.



5. To set the RSA to stop the handle at the RESET position, first pull the retractable stop and turn it 90 degrees to disengage the stop.



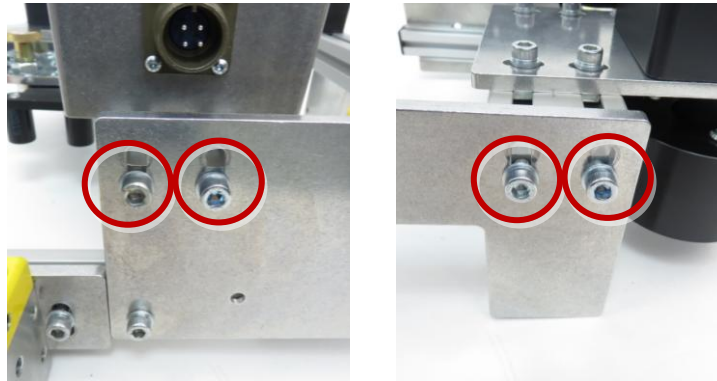
6. Tap the CLOSE button on the RSO to carefully jog the RSA until the Handle Operator has reached the RESET position. Slide the stop so it sits flush against the handle, and re-tighten the bolt.



3.2 Depth Adjustment

This RSA can be used on breakers that are recessed-mounted, as well as breakers that are flush mount or which extend out of the switchgear.

1. Loosen the two bolts on each side of the RSA, as indicated below, and the two on the magnet plate.



2. Install the RSA according to the instructions in the Installation section.
3. While mounting the RSA, slide the motor assembly into or out from the breaker as required, achieving proper engagement of the motor actuator and locator tabs.
4. Re-tighten any bolts loosened during adjustment.

3.3 Locator Tabs Adjustment

The locator tabs on this RSA can be adjusted to accommodate obstructions on a Recessed breaker

1. Loosen the three bolts on the bottom of each locator, as indicated below.



2. Install the RSA according to the instructions in the Installation section.
3. Slide the locators left or right as required to clear any obstructions.
4. Remove the RSA from the switchgear, and tighten the bolts in place.



Distance Is Safety®

A Group CBS Company

RSA-57V
Installation and Operation

2616 Sirius Road
Denton, TX 76208
Tel: 877-4-SAFETY
Fax: 940-382-9435
Website: www.CBSArcSafe.com
Email: info@CBSArcSafe.com

DANGER!

Ensure that personnel using this equipment are adequately trained in the operation of the switchgear they are planning to work with; that they are correctly stationed outside the arc flash boundary; and that they comply with all applicable Federal, State, Local, and In-house safety regulations and procedures. Attention should be given to distance, angle, and personal protective equipment (PPE).