

## RRS-3 GMI

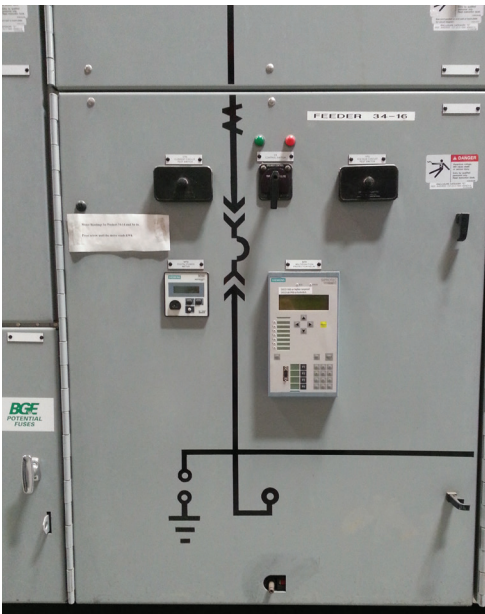
### Siemens Type GMI and Type 3AF

#### 1200-3000 A



#### DESCRIPTION

The **CBS ArcSafe® RRS-3 GMI** single-application remote racking system (RRS-3) is designed to operate the Siemens Type GMI and Type 3AF vacuum circuit breakers without having to make any modifications to existing electrical equipment thanks to CBS ArcSafe's magnetic latching system. The lightweight, portable RRS-3 GMI allows technicians to remotely install and remove a breaker while standing up to 300 feet away. The RRS-3 GMI is compatible with Type GMI and Type 3AF vacuum circuit breakers with ratings of 1200-3000 A, including 5-GMI, 7-GMI, 15-GMI, 5-3AF, 7-3AF, 15-3AF. Typical applications for the GMI and 3AF breakers include commercial, industrial, and service entrance applications to protect and switch main, feeders, and incoming lines. Designed, manufactured, and assembled in the United States, all RRS-3 units are portable, fast, and easy to set up; offer mechanical and/or electrical safety protection; are adjustable to fit unique electrical equipment configurations; reduce the requirements for personal protection equipment; and help customers with NFPA 70E arc-flash safety compliance. Optional features include 25-foot extension cables, 24 V DC LED light, wireless video camera system with LCD monitor, and rugged protective case assembly.



#### SPECIFICATIONS

WEIGHT:	21 lbs
DIMENSIONS:	11" L x 8.5" W x 26.5" H
POWER CONSUMPTION:	100 W
OPERATING DISTANCE:	25-300 feet
COMPATIBILITY:	Type GMI and Type 3AF vacuum circuit breakers including 5-GMI, 7-GMI, 15-GMI, 5-3AF, 7-3AF, 15-3AF
CONTROL/POWER SOURCE:	CBS ArcSafe® RSO-IV Control Console

#### OVERVIEW

- Remote operation from up to 300 feet
- Lightweight, portable, and adjustable
- Simple setup; no equipment modification required
- Reduces or eliminates need for arc-flash hazard suits
- Designed, manufactured, and assembled in the United States

