

# CBSArcSafe®

## RSA-107

(For Elliott 230)



Distance Is Safety®

**CBSArcSafe®**

A Group CBS Company

P.O. Box 550  
Argyle, TX 76226  
(940) 382-4411  
[www.cbsarcsafe.com](http://www.cbsarcsafe.com)

# 1.0 Components

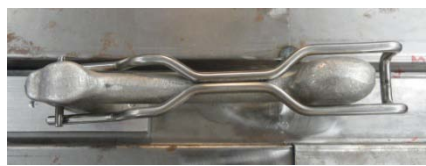
The Remote Switch Actuator (RSA-107) consists of a rotating arm attached to a gear motor. When power is applied from the remote switch operator (RSO-1), the RSA-107 gear motor transmits the rotary motion to the shaft and arm tool. This motion operates the rotary switch to the desired position before coming to rest against a hard stop. In order for the RSA-107 to function optimally, it must be properly adjusted either by CBS ArcSafe® prior to delivery or on-site by a qualified technician.

# 2.0 Installation

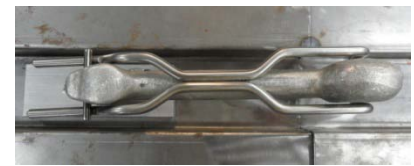
1. Ensure the motion of the RSA-107 arm is properly adjusted to the rotary switch to be operated. Adjust either the thumbscrew depth or the blue hard stop on the opposite side to set the length of the arc of travel.
2. Attach the interlock defeat to the switch. Follow the steps in the pictures to attach the interlock defeat.



Ensure switch is in interlocked position



Slide forks under the interlock roll pin and push down on the rear



Slide rear under handle and push forward until roll pin reaches the bend

3. If the RSA-107 is being installed on a closed switch, press and hold the “CLOSE” button before operating. If the RSA-107 is being installed on an open switch, press and hold the “TRIP” button before operating.
4. Install the RSA-107 on the switch to be operated. The hard stop on the upper magnet should rest on the top of the switch housing. Ensure that the motor shaft aligns with the handle shaft.
5. Secure the two twist lock magnets to the switch. Ensure the magnets on the RSA-107 mounting brackets are fully seated on the cabinet.
6. Attach the RSA-107 to the remote switch operator (RSO-1) by connecting and securing the four pin connector on the control box to the RSO-1 cable.

## 3.0 Operation

1. Ensure the RSA-107 is properly installed (see previous section).

**ATTENTION!**

*The location of certain items such as mimic bus, stickers, and/or placards may interfere with the installation of the RSA. These items may need to be removed or repositioned for proper RSA installation.*

**ATTENTION!**

*Please ensure that all cables are clear of moving parts. Failure to do so could damage cables and/or actuator.*

2. Exit the area and perform the remote switching operation.
3. To cycle switch, depress the applicable “CLOSE” and “TRIP” pushbuttons on the RSO-I. Hold down the applicable pushbutton until the switching operation is complete. Hard stops on the RSA-107 will prevent over-travel of the RSA-107 switching arm.
4. To remove the RSA-107 after the remote switching operation, reverse steps 1-6 of the installation section.





A Group CBS Company

**P.O. Box 550**  
**Argyle, TX 76226**  
**Tel: 940-382-4411**  
**Fax: 940-382-9435**  
**Website: [www.CBSArcSafe.com](http://www.CBSArcSafe.com)**  
**Email: [info@CBSArcSafe.com](mailto:info@CBSArcSafe.com)**

**DANGER!**

*\*Ensure that personnel using this equipment are adequately trained in the operation of the switchgear they are planning to work with; that they are correctly stationed outside the arc flash boundary; and that they comply with all applicable Federal, State, Local, and In-house safety regulations and procedures. Attention should be given to distance, angle, and personal protective equipment (PPE).*