



A Group CBS Company

## USERS MANUAL

# RSK-BBC5

## A Portable Actuator for Remotely Operating ITE/BBC Type LK Breakers



# Distance *is* Safety<sup>®</sup>

WHAT STANDS  
BETWEEN YOU  
AND ARC-FLASH  
DANGER?

# WE DO.

[CBSArcSafe.com](http://CBSArcSafe.com) | Email: [info@CBSArcSafe.com](mailto:info@CBSArcSafe.com) | **877-4-SAFETY** | Fax: 940-382-9435

Rev. December 2019

## User's Manual for the RSK-BBC5 model

- 1.0 Arc-blast Hazards
- 2.0 Safety Information
  - 2.1 Finger pinch points
- 3.0 Battery Information
  - 3.0 Battery Requirements
  - 3.1 Battery Life
  - 3.2 Battery Replacement
  - 3.3 Connecting/Disconnecting Batteries
  - 3.4 Static Discharge Potential
- 4.0 Operation
  - 4.1 Connecting the control cable
  - 4.2 Sequence of operation
  - 4.3 Attaching and removing the actuator
  - 4.4 Indicator lights
- 5.0 Care and Storage
  - 5.1 Storage
- 6.0 Warranty
- 7.0 Specifications



### 1.0 Arc-blast Hazards

The hazards associated with electrical arc-blasts are well documented. Studies conducted by numerous industries and professional organizations have sought to quantify the intensity of arc-blast, the risks to personnel, and various methodologies for mitigating the risks.

Without doubt, increasing the distance between the arc and a human is the single greatest favorable factor in reducing injuries.

The Chicken Switch® is not a panacea but rather one more tool available for protecting workers while they are performing electrical switching.

Using a Chicken Switch® may not negate the need for additional personal protective measures. The user is ultimately responsible for evaluating each situation to determine if additional protective measures are needed.



### WARNING

**ELECTRICAL SWITCHING  
MAY PRESENT RISK OF  
SERIOUS INJURY OR DEATH.  
THIS DEVICE SHOULD ONLY  
BE USED BY QUALIFIED  
PERSONS AFTER CAREFUL  
ANALYSIS OF THE HAZARDS.**

## 2.0 Safety Information

ALWAYS connect the control cable to the actuator BEFORE installing the Chicken Switch®.

### 2.1 Finger pinch points

The linear actuators on the RSK-BBC5 can extend with considerable force. Be careful not to get your fingers or body parts where they could be wedged between the linear actuators and a hard surface.

## 3.0 Battery Requirements

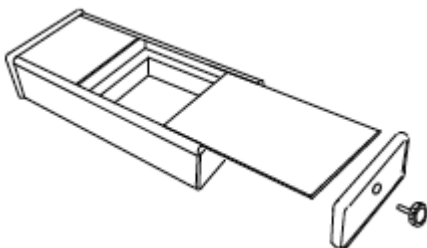
- Eight (8) AA alkaline cells are required. Carefully observe polarity when installing cells.
- Rechargeable batteries are not recommended.

### 3.1 Battery Life

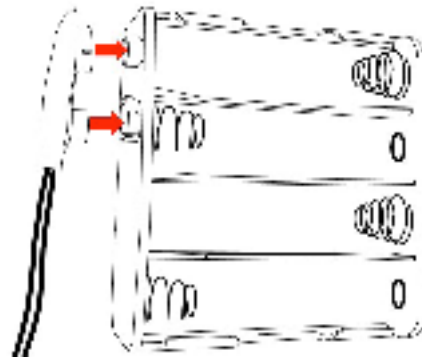
- A set of fresh alkaline cells should give hundreds of operations.
- The Chicken Switch® is designed as a portable device. It is not designed to remain with the control unit connected to the actuator for extended periods of time. To do so will deplete a fresh set of batteries in approximately four to five days.

### 3.2 Battery Replacement

- ALWAYS disconnect the control cable before replacing batteries to avoid possible static damage of the electronics!
- Turn the control station upside down, remove the endplate retaining knob. Remove the endplate and slide the cover out as shown below.

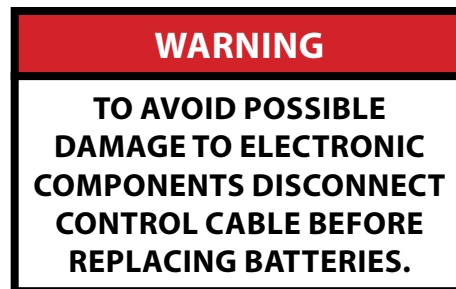


## 3.3 To connect/disconnect batteries:



## 3.4 CAUTION: Static Discharge Potential

- To avoid possible damage to electronic components disconnect the control cable before replacing batteries.



## 4.0 Operation

ALWAYS connect the control cable to the actuator BEFORE installing the Chicken Switch®.

### 4.1 Connecting the control cable



1. Align the arrow on the cable end with the top of the receptacle.
2. Push in and engage the threads on the coupling nut and turn clockwise.
3. After one or two turns of the coupling nut, push in on the cable end. Repeat this until the connector is fully seated.
4. Use a similar technique of turn-stop-and-pull to disengage the cable ends.

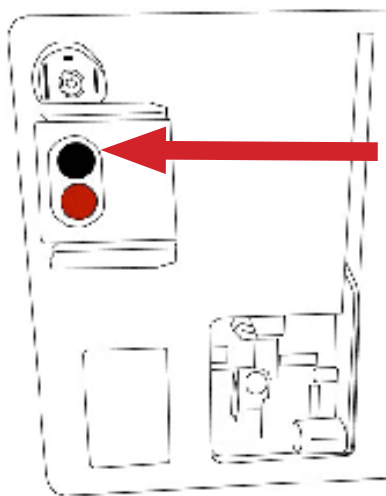
## 4.2 Sequence of Operation:

1. The breaker can be charged before or after installing the RSK-AK13 actuator.
2. Connect the control cable to the actuator and to the hand-held controller.
3. Position the actuator on the breaker by completing the steps on the following pages.
4. Ensure you are at a safe distance from the circuit breaker that is to be operated.
5. Turn the Power Switch on top of the hand-held controller to the ON position. The amber LED should illuminate indicating the unit is ready.
6. When ready to operate the actuator, press and HOLD the ENABLE button while depressing either then TRIP or CLOSE button for the desired operation. Both buttons must be held depressed until the actuator had fully depressed the button.
7. Release the ENABLE and TRIP or CLOSE buttons and the actuator will retract.

## 4.3 Attaching and Removing the Actuator:

### Installation of Mounting Brackets on Breaker

A RSK-BBC5 mounting bracket is required to be permanently installed on each breaker that is to be operated. Each RSK-BBC5 ships with one mounting bracket kit. Additional brackets (P/N P-0287) can be ordered from CBSArcSafe 1-877-472-3389. Instructions for installing the bracket are included with the kit.

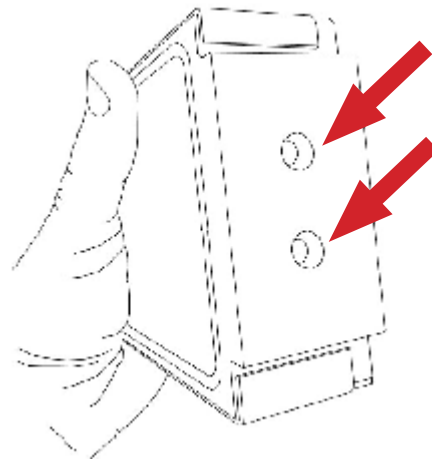


Permanently installed RSK-BBC5 mounting bracket P/N P-0287

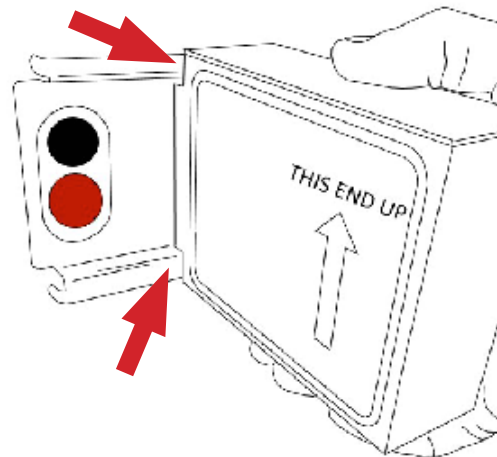
### Charging the Breaker

It is recommended that the breaker be charged after installing the RSK-BBC5 actuator to minimize the hazard of accidentally bumping the trip or close buttons. However, this may not always be possible. In these cases, the breaker can be charged before installing the actuator and extra care taken while installing the actuator.

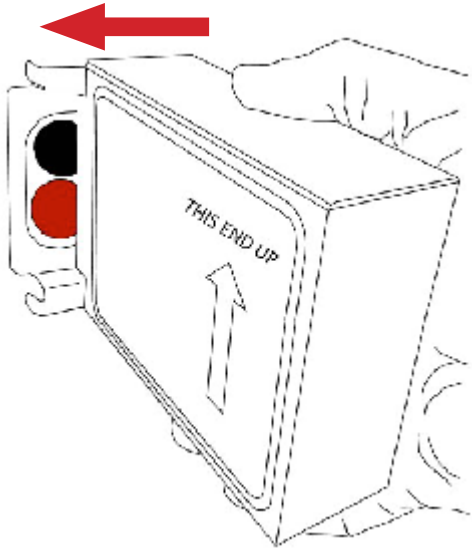
**Step 1:** Before installing the actuator, verify that the plungers are fully retracted. The actuator cannot be installed on the breaker unless the plungers are fully retracted.



**Step 2:** Place the actuator as shown on the right hand side of the bracket while engaging the slots in the actuator to the rails on the bracket. Pay close attention to the label which indicates "THIS END UP". The actuator will only install when positioned with the proper end up.

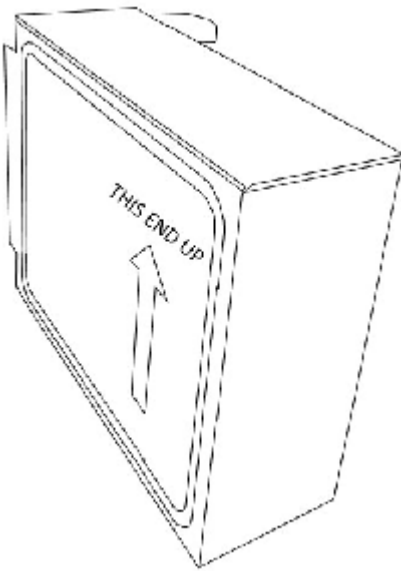


**Step 3:** Begin to slide the actuator to the left while making sure that it is engaged with both the top and bottom rails.



**Step 4:** Continue sliding all the way to the left until it won't go any further (up against stops on bracket). Lift up and down to make sure that it has engaged both upper and lower rails.

**Step 5:** Actuator is installed and ready to use.



**STEPS TO REMOVE THE ACTUATOR:** To remove the actuator, perform the above steps in the reverse order.

## 4.4 The indicator lights & controls:

**NOTE:** Red and Green indicator lights only work when the ENABLE button is depressed.

**GREEN:** indicates the actuator is being commanded to extend the ON actuator.

**RED:** indicates the actuator is being commanded to extend the OFF actuator.

**YELLOW:** indicates the hand-held controller is powered and is ready.

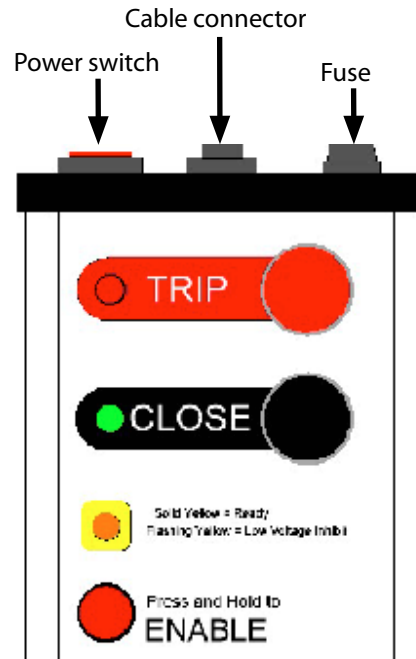
Rapidly **blinking YELLOW** indicates the battery voltage with zero load has fallen to an unacceptable level. Operation is inhibited until batteries with an acceptable voltage level are installed.

### The ENABLE button:

The Enable button must be continuously depressed in order to command the actuator.

Releasing the enable button has the same affect as releasing either the ON or OFF buttons – both actuators will move to the retracted position.

**NOTE:** If either of the actuators are held in the extended position for longer than approximately 2 seconds the actuator will de-energize and will remain in extended position. When the pushbutton or the enable button is released, the actuator will retract.



## 5.0 Care and Storage

### 5.1 Storage

Remove all batteries from the control station if the device will not be used for longer than 6 months.

Never store the batteries where the ambient temperature might exceed 110° F.

Avoid getting the unit wet or storing it in a high humidity location.

### 6.0 Warranty

CBS ArcSafe® guarantees all products manufactured by CBS ArcSafe® only against defects in materials and/or workmanship for a period of twelve (12) months commencing on the date the product is received by the customer. THIS WARRANTY IS IN LIEU OF ALL OTHER EXPRESS OR IMPLIED WARRANTIES INCLUDING THOSE OF MERCHANTABILITY AND FITNESS FOR A PARTICULAR PURPOSE.

CBS ArcSafe® will, at its option and its cost (excluding shipping expenses) repair, replace or refund the purchase price of any product manufactured by CBS ArcSafe® which has a covered defect in materials and/or workmanship. THIS IS CUSTOMER'S EXCLUSIVE REMEDY FOR BREACH OF WARRANTY. IN NO EVENT WILL CBS ARCSAFE'S® LIABILITY FOR DAMAGES (WHETHER ARISING FROM BREACH OF CONTRACT OR WARRANTY, NEGLIGENCE, STRICT LIABILITY OR OTHERWISE) EXCEED THE PURCHASE PRICE OF THE PRODUCT CONCERNED NOR WILL CBS ARCSAFE® BE LIABLE FOR PUNITIVE, INCIDENTAL, CONSEQUENTIAL OR SPECIAL DAMAGES (INCLUDING WITHOUT LIMITATION LOST PROFITS) EVEN IF ADVISED OF THE POSSIBILITY OF SUCH DAMAGES.

This warranty does not cover damage caused by accident, improper care, negligence, normal wear and tear, natural causes, unlicensed repairs, and incompetent supervision. This warranty also does not cover repairs or replacements made by

unauthorized individuals except when agreed to in writing. CBS ArcSafe® reserves the right to disallow warranty repairs if the unit has been disassembled or misused, as determined by CBS ArcSafe® in good faith. Please contact us at (877) 472-3389.

## 7.0 Specifications

MECHANICAL	
Projected Life	20,000 operations
ELECTRICAL	
Operating voltage:	12 volts DC
Fuse	3 amp
Power supply	8 AA alkaline disposable batteries. When used properly, one set of batteries should yield hundreds of operations.
Control Cable:	30 feet in length (9.1 meters), 5-conductor, extra-flexible, PUR insulation
Controller:	Requires two-hand operation. The 'enable' button must be depressed while depressing the ON or OFF buttons.  A programmable micro-controller manages control inputs, linear actuators, and performs timing functions to protect the actuator in a stalled condition. Intelligent 'H-bridge' motor drivers provide start/stop/braking actuator functions

### Worldwide Headquarters & U.S. Sales

CBS ArcSafe, Inc. A Group CBS Company  
2616 Sirius Road | Denton, TX 76208  
Ph: 877-4-SAFETY | Ph: 940-382-4411 | Fx: 940-382-9435  
[info@CBSArcSafe.com](mailto:info@CBSArcSafe.com)

### Charleston, WV Facility

4782 Chimney Drive | Charleston, WV 25302  
Ph: 800-248-4958 | Ph: 304-965-9220 | Fx: 304-965-9221

### U.K. /Europe Office

27 Cressey Avenue | Shenley Brook End  
Milton Keynes, Buckinghamshire  
United Kingdom MK57EL  
Phone: +447 770 500577