

DESCRIPTION

The CBS ArcSafe® **RSK-CS01W**, a wireless remote switch kit, operates control switches with pistol-grip handles, such as the Electroswitch Series 24/24P and the General Electric SB-1, from up to 100 feet away, well outside the arc-flash boundary. Several models and sizes are available to accommodate different types of pistol-grip control switches. The RSK-CS01W is temporarily installed over the control switch and held in place magnetically. No modification to switchgear is required. The wireless handheld controller allows the operator to be positioned outside of the arc-flash hazard zone. A motor and gearbox in the actuator rotate the control switch to the commanded position. A microcontroller monitors controller inputs, ensures correct switch positioning, and drives the motor through an intelligent H-bridge. The RSK-CS03 and RSK-CS04 are also available in the wireless format.

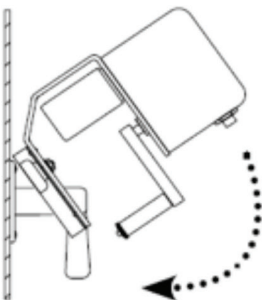
All RSK-CS01W models include the actuator, wireless handheld controller with 100-foot operating range, POWERED BY M18™ REDLITHIUM™ rechargeable battery, battery charger, durable/waterproof Pelican® carrying case, and instruction manual.



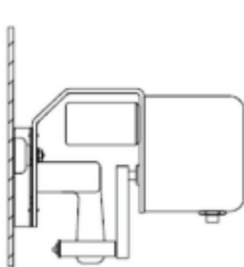
INSTALLATION

Three easy steps. Installs in seconds. RSKs do not require external power or modifications to switchgear.

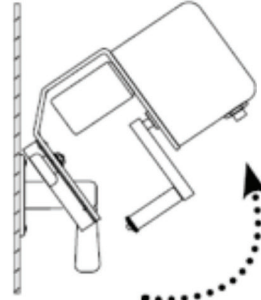
Step 1
Install



Step 2
Operate



Step 3
Remove



POWERED BY
M18 REDLITHIUM

CS*
CHICKEN SWITCH®



RSK-CS01W

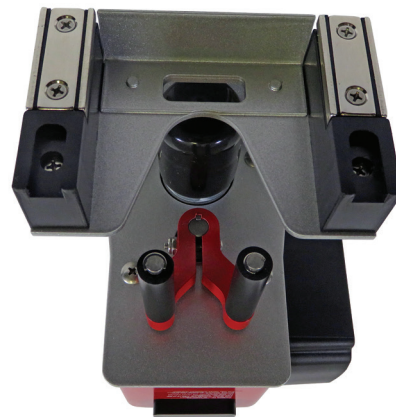
Select models of control switches

With pistol-grip handles

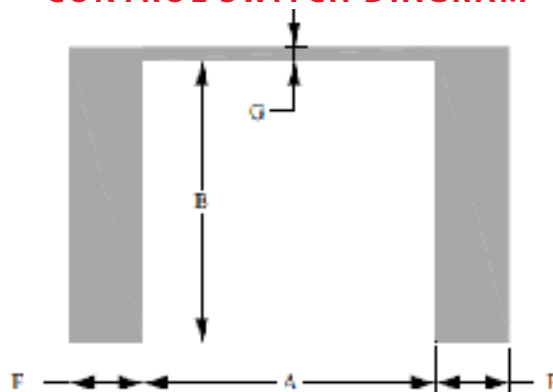
SPECIFICATIONS

- Power supply: POWERED BY M18™ REDLITHIUM™ CP2.0 (Milwaukee part no. 48-11-1820); other M18 batteries are compatible. *Note: Use only batteries manufactured by Milwaukee; otherwise warranty will be void.*
- Wireless transmitter: Operating frequency 2.4 Ghz, 6.3 mWh output
Indoor range: 100 ft.
Line of sight range: 200 ft.
Complies with Part 15 of FCC rules
- Holding magnets: Two, each rated 55.1 lbs./25 kg force; 13,200 gauss
- Actuator weight (with battery attached): 4.5 lbs./2.04 kg
- Actuator size: 8.5" x 6.5" x 5.75"
- Complete RSK weight: 12 lbs./5.44 kg
- Programmable microcontroller: Manages control inputs and motor functions, monitors and limits mechanical travel, and performs timing functions to protect the motor in a stalled condition
- Controller: Model no. RTL-1; 5.5" x 2.75"; 0.45 lbs./0.20 kg
- H-bridge: Intelligent H-bridge motor driver with integral thermal shutdown protection provides start/stop/braking motor functions
- Projected life: 20,000 +/- operations

Note: Some actuator models have two user-selectable levels of rotation.



CONTROL SWITCH DIAGRAM



RSK-CS (CONTROL SWITCH) MODELS

	A	B	F	G	MAX CONTROL SWITCH ESCUTCHEON THICKNESS	MAX CONTROL SWITCH HANDLE WIDTH	# MAGNETS	MAGNET STRENGTH (GAUSS)	SELECTABLE ROTATION?
CS01	3.1"	3.38"	0.75"	0.20"	0.80"	0.86"	2	13200	Yes
CS03	3.7"	3.38"	0.75"	0.20"	0.80"	0.86"	2	13200	Yes
CS04	2.7"	3.38"	0.75"	0.10"	0.60"	0.86"	2	13200	No

