

#### DESCRIPTION

The CBS ArcSafe® **RSK-CS\*W** Series of wireless remote switch kits (RSKs), operates control switches with pistol-grip handles, such as the Electroswitch Series 24/24P and the General Electric SB-1, from up to 100 feet away, well outside the arc-flash boundary. Several models and sizes are available to accommodate different types of pistol-grip control switches. The RSK-CS\*W is temporarily installed over the control switch and held in place magnetically. No modification to switchgear is required. The wireless handheld controller allows the operator to be positioned outside of the arc-flash hazard zone. A motor and gearbox in the actuator rotate the control switch to the commanded position. A microcontroller monitors controller inputs, ensures correct switch positioning, and drives the motor through an intelligent H-bridge. The RSK-CS\*W Series is available for the RSK-CS01, RSK-CS03, and the RSK-CS04.

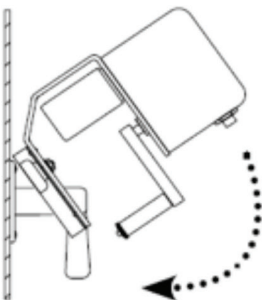
All RSK-CS\*W Series models include the actuator, wireless handheld controller with 100-foot operating range, POWERED BY M18™ REDLITHIUM™ rechargeable battery, battery charger, durable/waterproof Pelican® carrying case, and instruction manual.



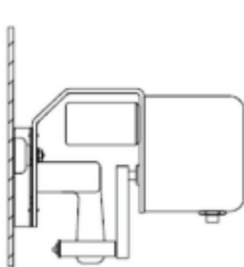
#### INSTALLATION

Three easy steps. Installs in seconds. RSKs do not require external power or modifications to switchgear.

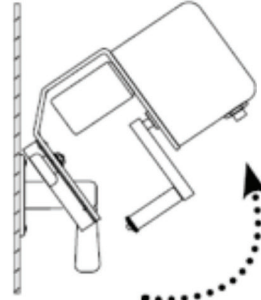
**Step 1**  
Install



**Step 2**  
Operate



**Step 3**  
Remove



POWERED BY  
M18 REDLITHIUM

CS\*  
CHICKEN SWITCH®



# Wireless CS Series

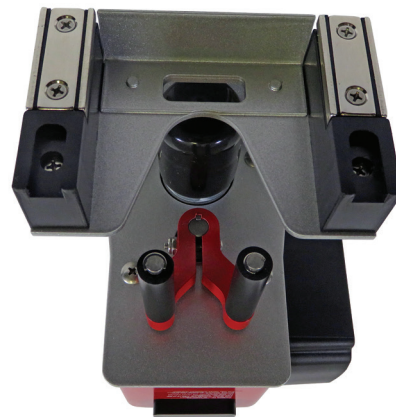
## Select models of control switches

For RSK-CS01W, RSK-CS03W, and RSK-CS04W

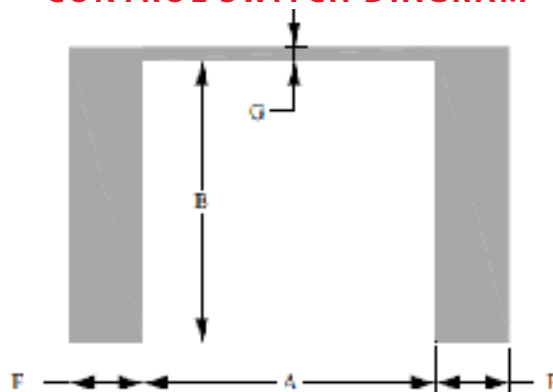
### SPECIFICATIONS

- Power supply: POWERED BY M18™ REDLITHIUM™ CP2.0 (Milwaukee part no. 48-11-1820); other M18 batteries are compatible. *Note: Use only batteries manufactured by Milwaukee; otherwise warranty will be void.*
- Wireless transmitter: Operating frequency 2.4 Ghz, 6.3 mWh output  
Indoor range: 100 ft.  
Line of sight range: 200 ft.  
Complies with Part 15 of FCC rules
- Holding magnets: Two, each rated 55.1 lbs./25 kg force; 13,200 gauss
- Actuator weight (with battery attached): 4.5 lbs./2.04 kg
- Actuator size: 8.5" x 6.5" x 5.75"
- Complete RSK weight: 12 lbs./5.44 kg
- Programmable microcontroller: Manages control inputs and motor functions, monitors and limits mechanical travel, and performs timing functions to protect the motor in a stalled condition
- Controller: Model no. RTL-1; 5.5" x 2.75"; 0.45 lbs./0.20 kg
- H-bridge: Intelligent H-bridge motor driver with integral thermal shutdown protection provides start/stop/braking motor functions
- Projected life: 20,000 +/- operations

*Note: Some actuator models have two user-selectable levels of rotation.*



### CONTROL SWITCH DIAGRAM



### RSK-CS (CONTROL SWITCH) MODELS

	A	B	F	G	MAX CONTROL SWITCH ESCUTCHEON THICKNESS	MAX CONTROL SWITCH HANDLE WIDTH	# MAGNETS	MAGNET STRENGTH (GAUSS)	SELECTABLE ROTATION?
CS01	3.1"	3.38"	0.75"	0.20"	0.80"	0.86"	2	13200	Yes
CS03	3.7"	3.38"	0.75"	0.20"	0.80"	0.86"	2	13200	Yes
CS04	2.7"	3.38"	0.75"	0.10"	0.60"	0.86"	2	13200	No

